

Multi - turn actuators

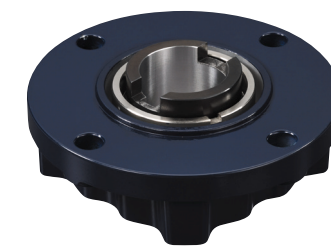
Sun Yeh M Series multi-turn actuator equipped with LCD display and touch screen is suitable with various types of valves and allows the users to easily operate under various lighting conditions. The manual override is a clutch-less design to allow the motorized operation switched to manual operation easily and stably, no matter under normal operation or in case of power outage.



www.powervalves.nl



Actuator Drive Coupling



• Non - rising stem



• Rising stem

Model	Actuator Output Speed	Non - rising stem		Rising stem		Mounting Flange
		Max Torque	Max Stem Acceptance Diameter	Max Stem Acceptance Diameter	Max Thrust	
	rpm	Nm	mm	mm	kN	ISO 5210
M41	40 - 120	41	35	28xP5	40	F10
M55	30 - 90	55				
M80	20 - 60	80				
M100	15 - 45	100				

Features

- Equipped with DCBL motors to enable both of output torque and speed adjustable.
- Position display enabled.
- Equipped with LCD display modules for the indications of status and setup steps.
- Protectors equipped to prevent from overload and instant reversing damage.
- Double seal design allowing high standard weather resistant.
- Obtained patent in UK, USA, Taiwan, China, Japan, and Germany.
- The temperatures of motor and electronic components are detectable.

G Series Multi-turn Gear Box



• Non - rising stem



• Rising stem

Suitable Multi - turn actuator	Actuator Output Speed	Non - rising stem		Rising stem		Mounting Flange
		Max Torque	Max Stem Acceptance Diameter	Max Thrust	Max Stem Acceptance Diameter	
	rpm	Nm	mm	kN	mm	ISO 5210
M41	13 - 40	123	40	70	32xP6	F12
M55	10 - 30	162				
M80	7 - 20	234				

Suitable Multi - turn actuator	Actuator Output Speed	Non - rising stem		Rising stem		Mounting Flange
		Max Torque	Max Stem Acceptance Diameter	Max Thrust	Max Stem Acceptance Diameter	
	rpm	Nm	mm	kN	mm	ISO 5210
M41	8 - 24	205	45	100	36xP6	F14
M55	6 - 18	270				
M80	4 - 12	390				

Suitable Multi - turn actuator	Actuator Output Speed	Non - rising stem		Rising stem		Mounting Flange
		Max Torque	Max Stem Acceptance Diameter	Max Thrust	Max Stem Acceptance Diameter	
	rpm	Nm	mm	kN	mm	ISO 5210
M55	4.3 - 13	378	60	150	44xP7	F16
M80	2.8 - 8.6	546				
M100	2.1 - 6.4	693				