

# Rivulis F3300 Metal Screen Filter with Electric Operation (Automatic)

## Operating Guidelines

Minimum working pressure: 1,0 bar

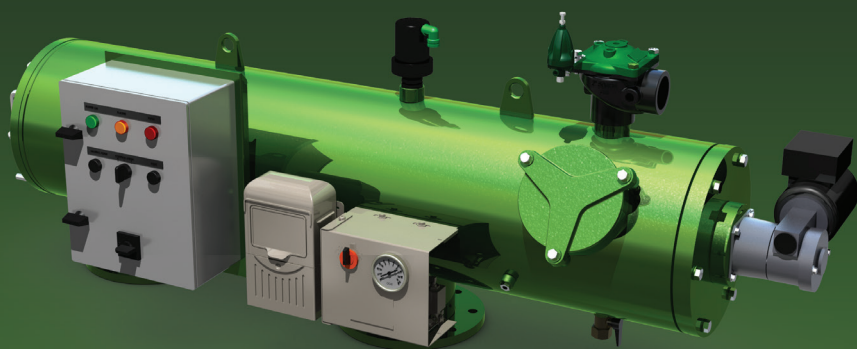
Maximum working pressure: 8,0 bar

Maximum pressure: 10,0 bar

## Ordering Information

Screen options: 100,130, 200 micron

Sintered Screen



The F3300 Metal Screen Filters with Electric Operation are highly efficient and self-cleaning. The sintered screens are automatically cleaned with the continuous linear movement of the suction nozzles, which are driven by an electric motor. The flushing cycle of the F3300 Metal Screen Filters are actuated at a predetermined pressure differential or on a schedule using the timer. The filters continue to operate during flushing and utilize a small amount of water during flushing, making the filters very efficient.

The F3300 Metal Screen Filters with Electric Operation are used as primary filters for water containing large quantities of dirt, up to 50 ppm, and are used with water sources such as rivers, lakes, wells, and recycled water.

# Rivulis F3300 Metal Screen Filter with Electric Operation (Automatic)

## Product Summary

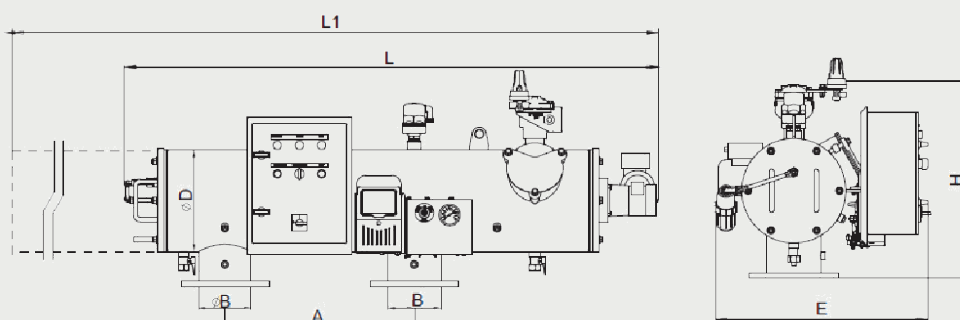
Inlet/Outlet (inch)	Inlet/Outlet (mm)	Body	Connections	Max. Flow rate (m <sup>3</sup> /h)	Screen area (cm <sup>2</sup> )	Screens (micron)	Current options
2	50	Parallel	BSP	25	2500	100, 130, 200	AC 1x230V 50Hz, AC 1x110V 60Hz
3	80	Parallel	BSTD, ISO16	40	2500	100, 130, 200	AC 1x230V 50Hz, AC 1x110V 60Hz
4	100	Parallel	BSTD, ISO16	80	4000	100, 130, 200	AC 1x230V 50Hz, AC 1x110V 60Hz
6	150	Parallel-L	BSTD, ISO16	150	6000	100, 130, 200	AC 1x230V 50Hz, AC 1x110V 60Hz
8	200	Parallel-L	BSTD, ISO16	300	8000	100, 130, 200	AC 1x230V 50Hz, AC 1x110V 60Hz
10	250	Parallel	BSTD, ISO16	400	6000	100, 130, 200	AC 1x230V 50Hz, AC 1x110V 60Hz
12	300	Parallel	BSTD, ISO16	470	8000	100, 130, 200	AC 1x230V 50Hz, AC 1x110V 60Hz
14	350	Parallel	BSTD, ISO16	550	8000	100, 130, 200	AC 1x230V 50Hz, AC 1x110V 60Hz
12 (Long)	300	Parallel Long	BSTD, ISO16	600	10050	100, 130, 200	AC 1x230V 50Hz, AC 1x110V 60Hz
14 (Long)	350	Parallel Long	BSTD, ISO16	800	10050	100, 130, 200	AC 1x230V 50Hz, AC 1x110V 60Hz
16 (Long)	400	Parallel Long	BSTD, ISO16	1000	10050	100, 130, 200	AC 1x230V 50Hz, AC 1x110V 60Hz
18 (Long)	450	Parallel Long	BSTD, ISO16	1300	16150	100, 130, 200	AC 1x230V 50Hz, AC 1x110V 60Hz
20 (Long)	500	Parallel Long	BSTD, ISO16	1600	16150	100, 130, 200	AC 1x230V 50Hz, AC 1x110V 60Hz

## Product dimensions - Parallel

Inlet/Outlet (inch)	B (mm)	D inch	A (mm)	E (mm)	H (mm)	L (mm)	L1 (mm)	Weight (kg)
2	50	12"	430	680	650	1480	2480	175
3	80	12"	430	680	650	1480	2480	178
4	100	12"	600	680	650	1660	2780	212
6	150	12"	600	680	650	1660	2780	215
8	200	12"	780	715	780	1925	3280	312
10	250	16"	780	715	780	1925	3280	318
12	300	16"	990	715	780	2225	3830	350
14	350	16"	990	715	780	2225	3830	376

## Product dimensions - Parallel long

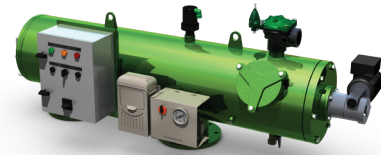
Inlet/Outlet (inch)	B (mm)	D inch	A (mm)	E (mm)	H (mm)	L (mm)	L1 (mm)	Weight (kg)
12 L	300	18"	1200	700	890	2820	4710	450
14 L	350	18"	1200	735	890	2820	4710	465
16 L	400	18"	1200	760	890	2820	4710	480
18 L	450	24"	1400	860	1140	3110	5210	650
20 L	500	24"	1400	985	1140	3110	5210	679



# Rivulis F3300 Metal Screen Filter with Electric Operation (Automatic)

## Product head loss chart (bar) - 50-150 mm parallel

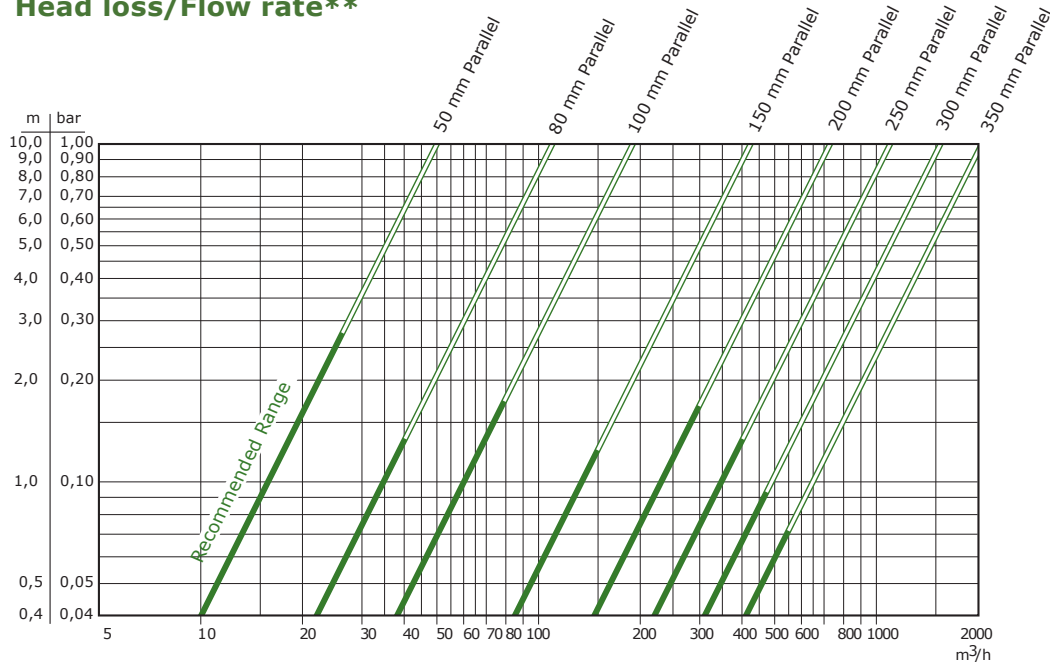
Filter	Flow rate m <sup>3</sup> /hr													
Inlet/Outlet (inch)	15	20	25	50	75	100	125	150	200	250	300	350	400	
	Head loss (bar)													
2	0,09	0,16	0,25	1,00										
3			0,05	0,21	0,46	0,83								
4				0,07	0,16	0,28	0,44	0,64	1,13					
6						0,06	0,09	0,12	0,22	0,35	0,50	0,68	0,89	



## Product head loss chart (bar) - 200-350 mm parallel

Filter	Flow rate m <sup>3</sup> /hr													
Inlet/Outlet (inch)	200	300	400	500	600	700	800	900	1000	1200	1500	1800	2000	
	Head loss (bar)													
8	0,08	0,17	0,3	0,47	0,68	0,92	1,2							
10		0,07	0,13	0,21	0,3	0,4	0,53	0,67	0,83	1,19				
12			0,07	0,11	0,15	0,21	0,27	0,34	0,42	0,61	0,95			
14				0,06	0,09	0,12	0,15	0,19	0,24	0,35	0,54	0,78	0,96	

## Head loss/Flow rate\*\*

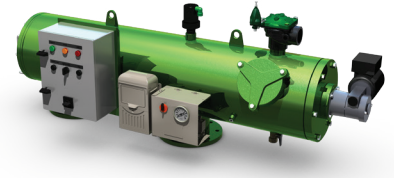


\*\*For a clean filter and 130 micron screen.

# Rivulis F3300 Metal Screen Filter with Electric Operation (Automatic)

## Product head loss chart (bar) - 300 - 400 mm parallel long

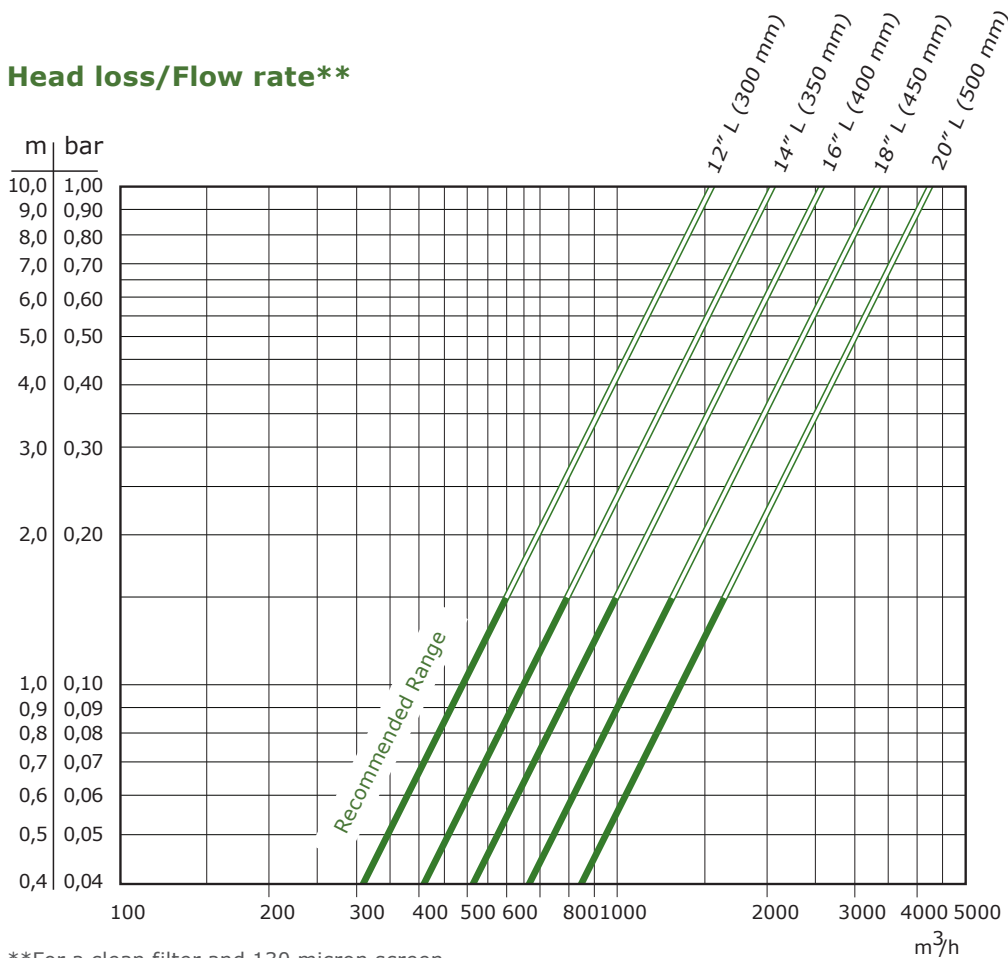
Filter (inch)	Flow Rate m <sup>3</sup> /hr												
	400	500	600	700	800	900	1000	1200	1500	1800	2000	2300	2500
12 L	0,07	0,11	0,15	0,21	0,27	0,34	0,42	0,61	0,95				
14 L		0,06	0,09	0,12	0,15	0,19	0,24	0,35	0,54	0,78	0,96		
16 L			0,05	0,07	0,09	0,12	0,15	0,21	0,33	0,48	0,59	0,78	0,92



## Product head loss chart (bar) - 450 - 500 mm parallel long

Filter (inch)	Flow Rate m <sup>3</sup> /hr												
	800	1000	1250	1500	1750	2000	2250	2500	2750	3000	3500	4000	4250
18 L	0,06	0,09	0,14	0,20	0,28	0,36	0,46	0,56	0,68	0,81	1,10		
20 L		0,06	0,09	0,12	0,17	0,22	0,28	0,34	0,42	0,50	0,68	0,88	1,00

## Head loss/Flow rate\*\*



\*\*For a clean filter and 130 micron screen.