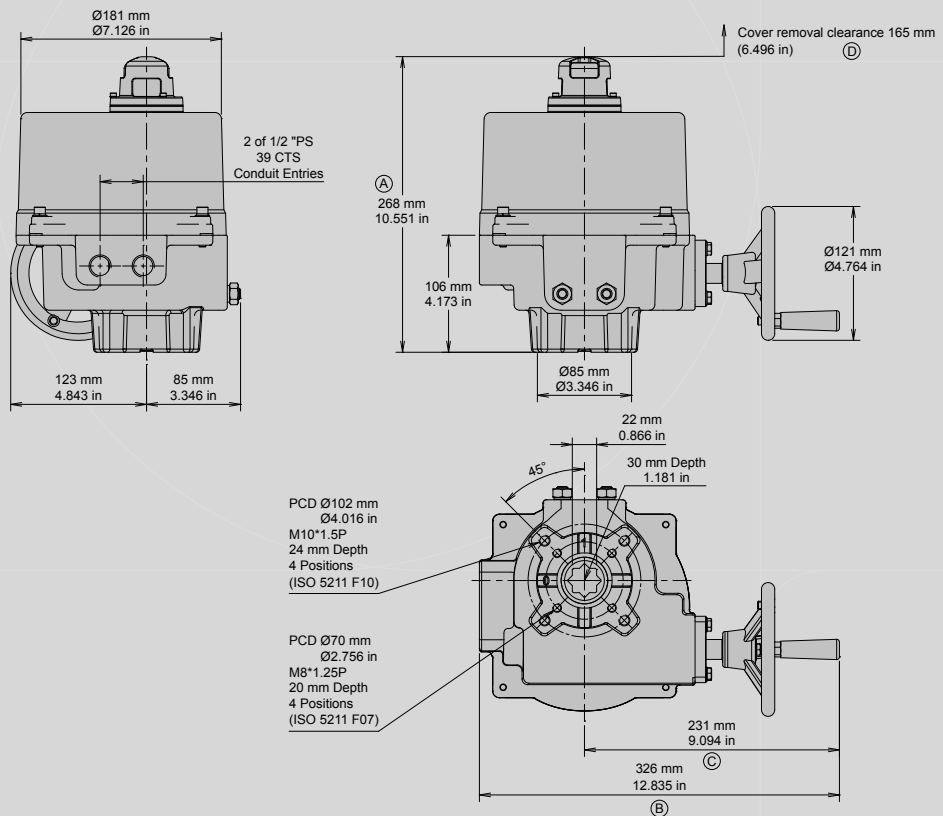




### OM-2 / 3

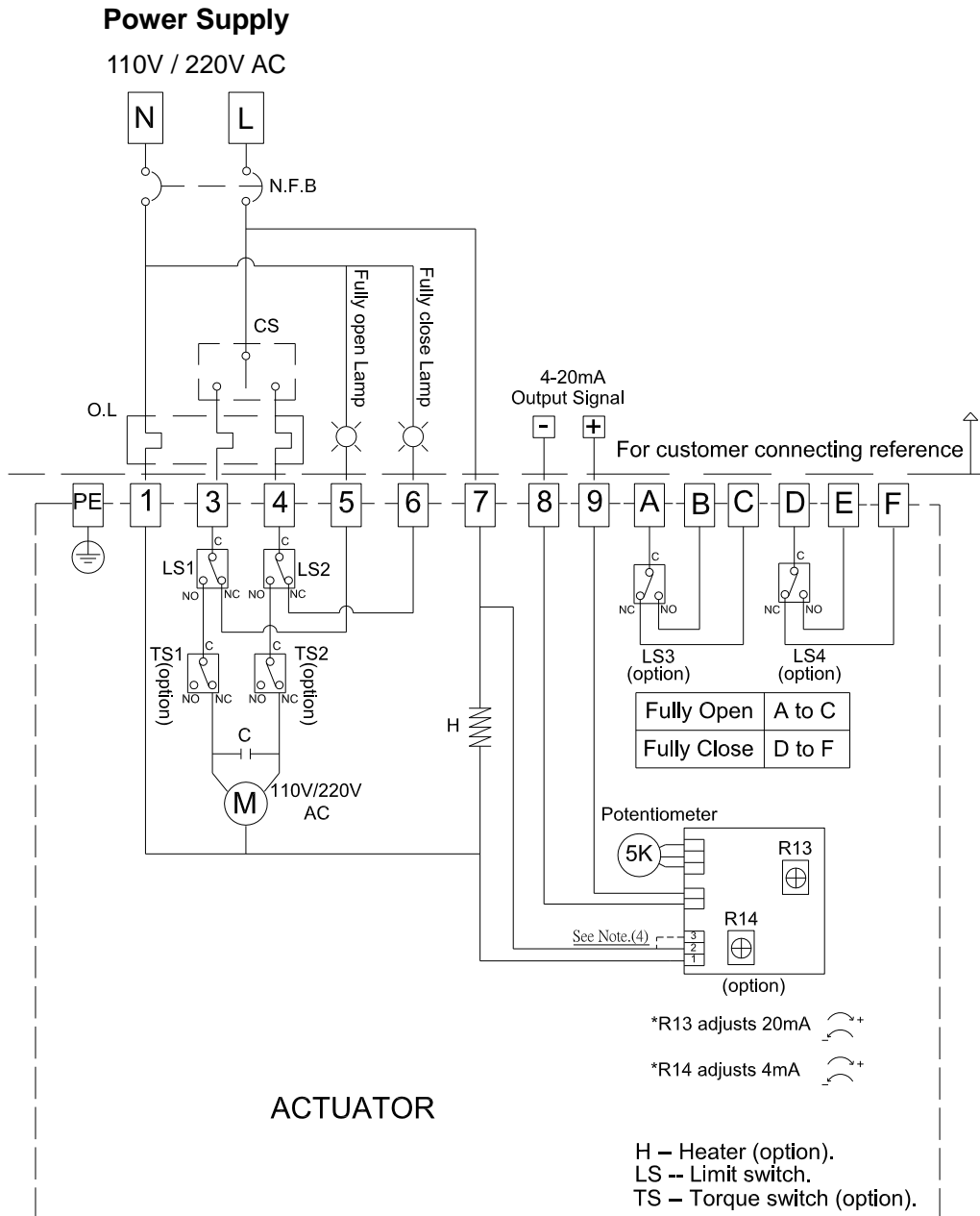


- Apply to DC models or 75% duty cycle, A)  $302 \text{ mm}$  ( $11.890 \text{ in}$ ), Cover removal clearance, D)  $199 \text{ mm}$  ( $7.834 \text{ in}$ )
- With torque switch, B)  $363 \text{ mm}$  ( $14.291 \text{ in}$ ), C)  $268 \text{ mm}$  ( $10.551 \text{ in}$ )

# WIRING DIAGRAM – Quarter Turn Actuator

OM-2 ~ OM-13 110V , 220V AC 1-Phase

On-Off Controller , Analog Signal Output



**NOTE:**

1. "N" connects to #1, " L " connects to #7.
2. "L" connects to #3 for "OPEN", "L" connects to #4 for "CLOSE".
3. Using less than 5A current for "A, B, C, D, E, F".
4. If the control power is 220V AC, N & L connect to #1 & #3.  
If the control power is 110V AC, N & L connect to #1 & #2 or #2 & #3.