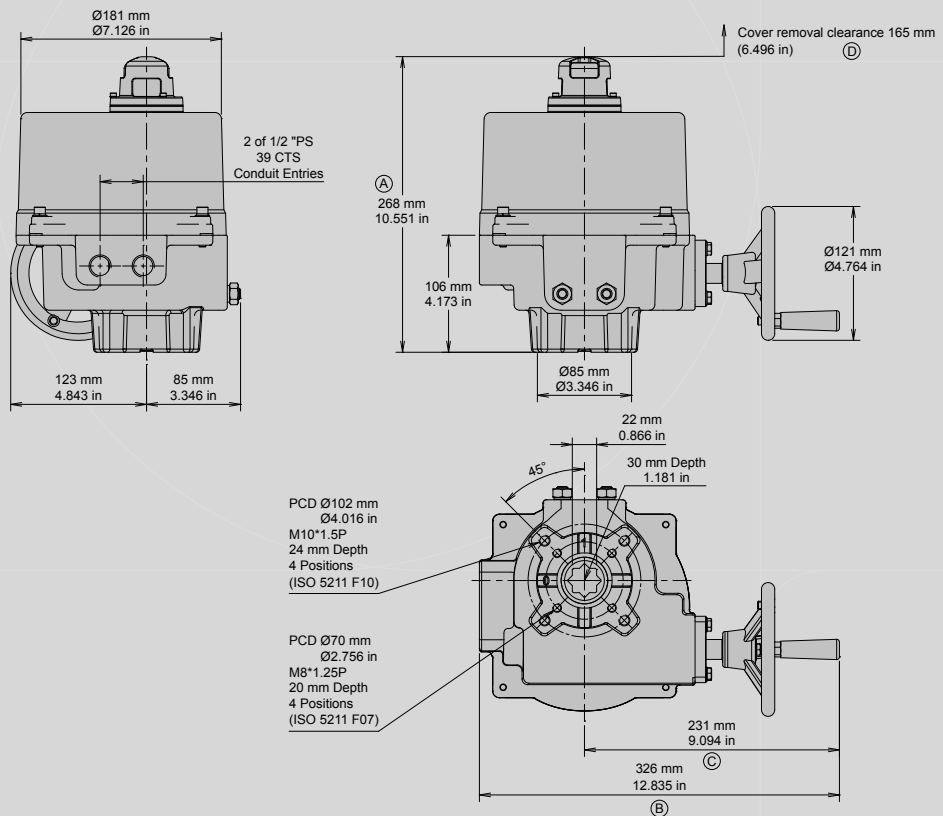




OM-2 / 3



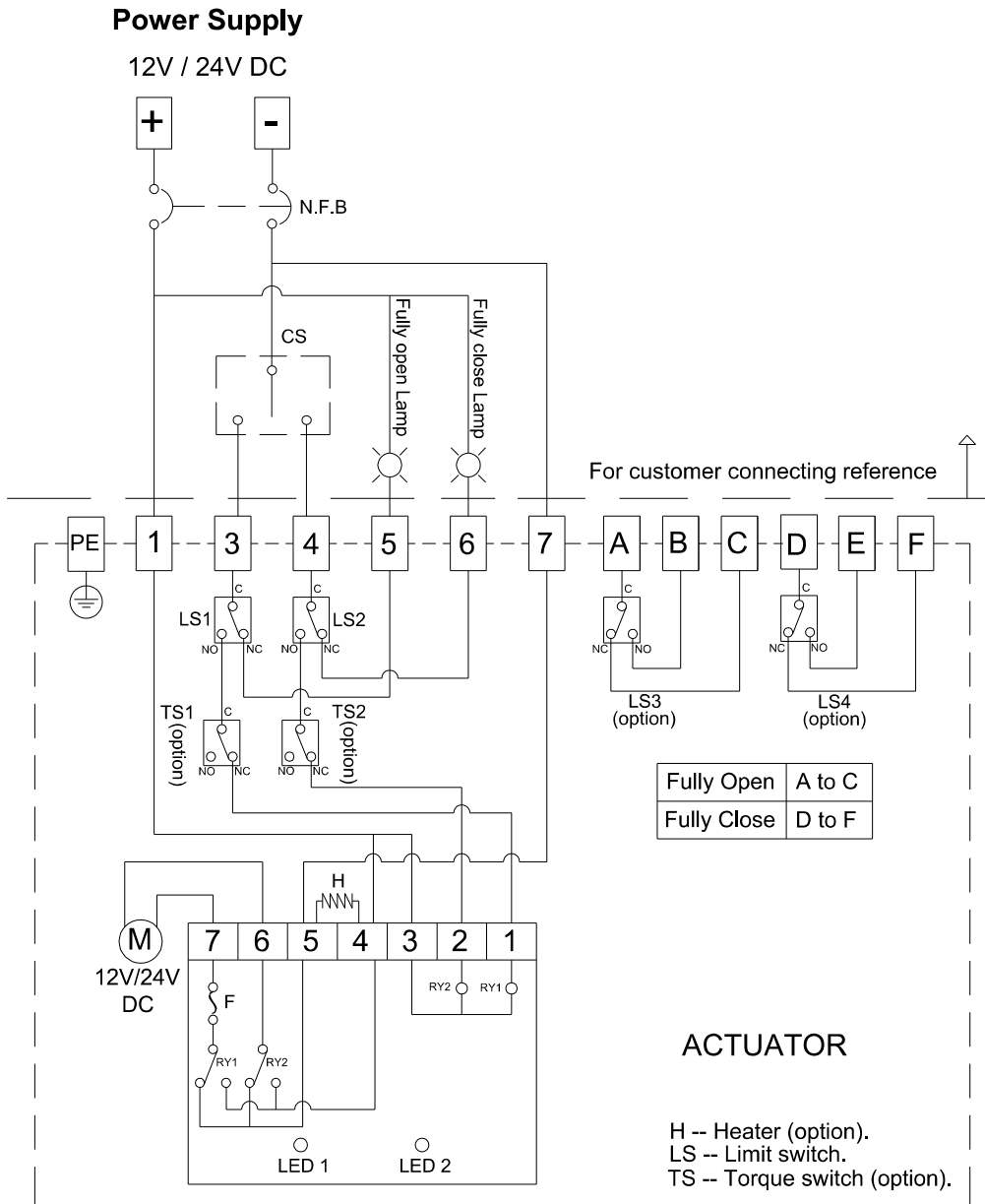
- Apply to DC models or 75% duty cycle, (A) 302 mm (11.890 in), Cover removal clearance, (D) 199 mm (7.834 in)
- With torque switch, (B) 363 mm (14.291 in), (C) 268 mm (10.551 in)

WIRING DIAGRAM – Quarter Turn Actuator

OM-2 ~ OM-6 12V DC

OM-2 ~ OM-12 , OM-F , OM-G 24V DC

On-Off Controller



NOTE:

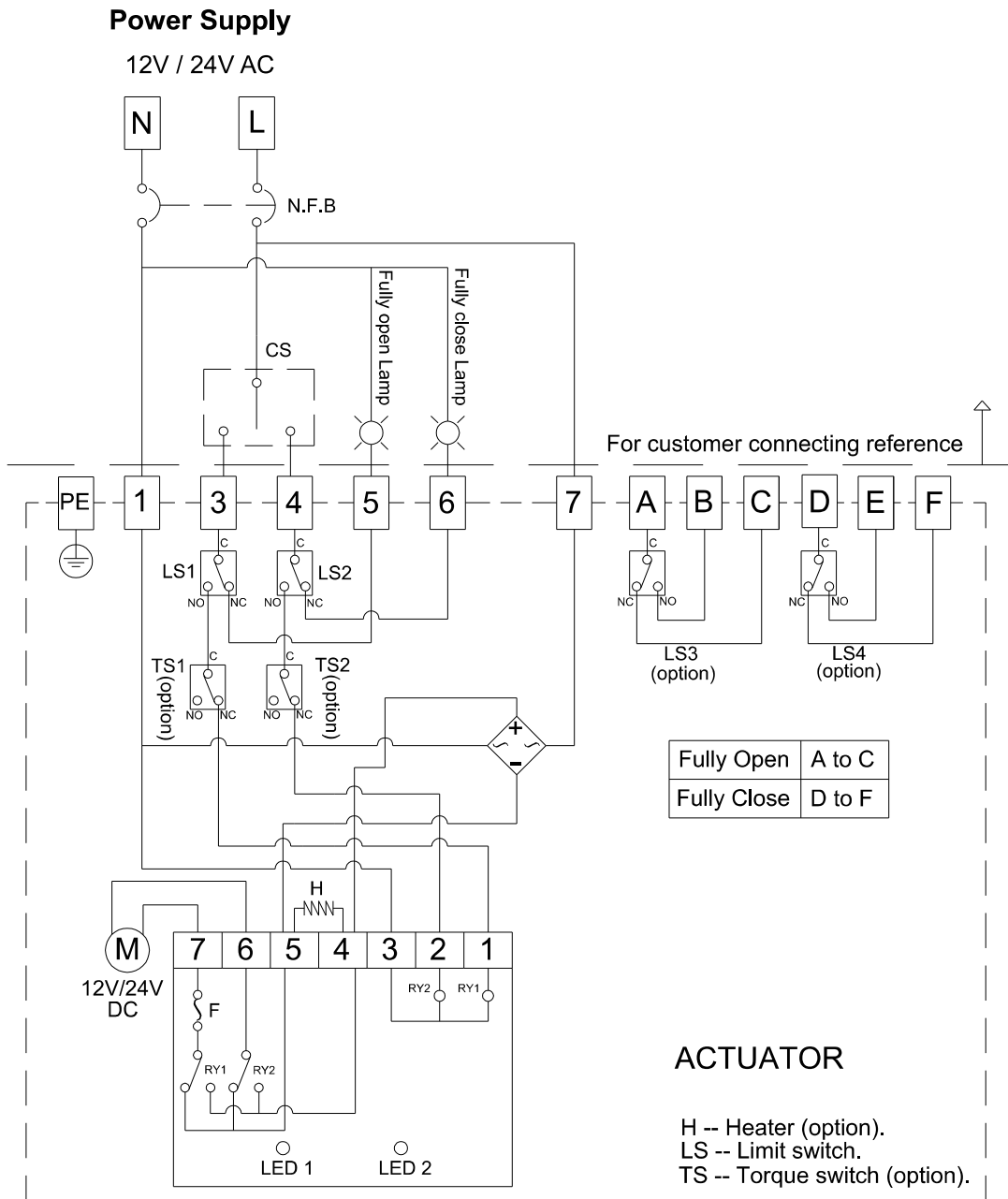
1. "+" connects to #1, "-" connects to #7.
2. "-" connects to #3 for "OPEN", "-" connects to #4 for "CLOSE".
3. Using less than 5A current for "A, B, C, D, E, F".
4. Using battery to supply power for DC units.

WIRING DIAGRAM – Quarter Turn Actuator

OM-2 ~ OM-6 12V AC

OM-2 ~ OM-12 , OM-F , OM-G 24V AC

On-Off Controller



NOTE :

1. "N" connects to #1, "L" connects to #7.
2. "L" connects to #3 for "OPEN", "L" connects to #4 for "CLOSE".
3. Using less than 5A current for "A, B, C, D, E, F".