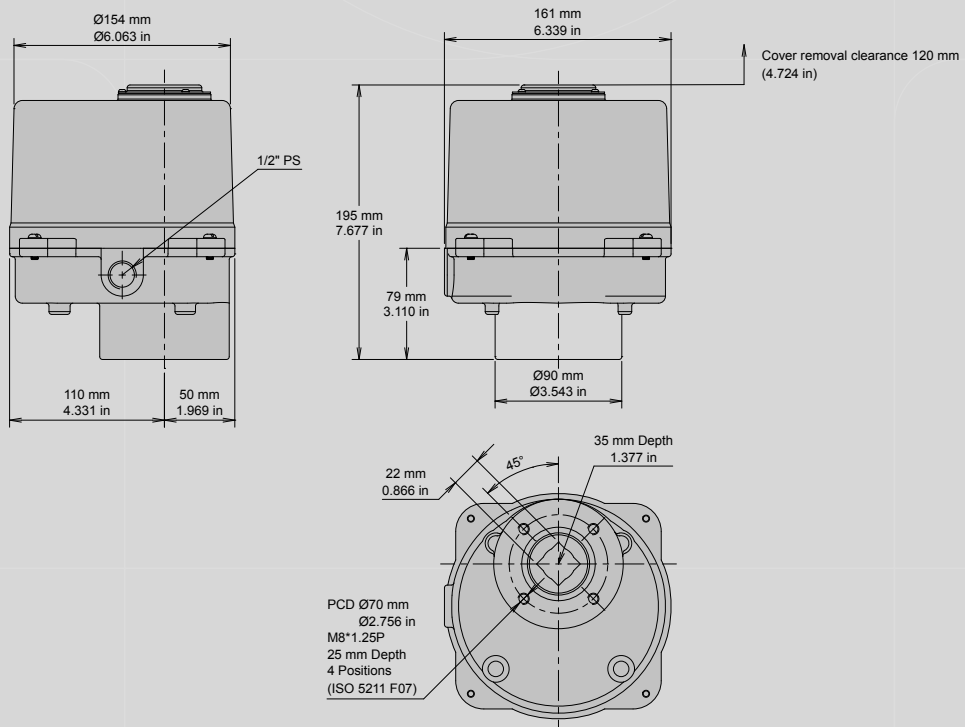


# Outline Dimensions



## BM-2

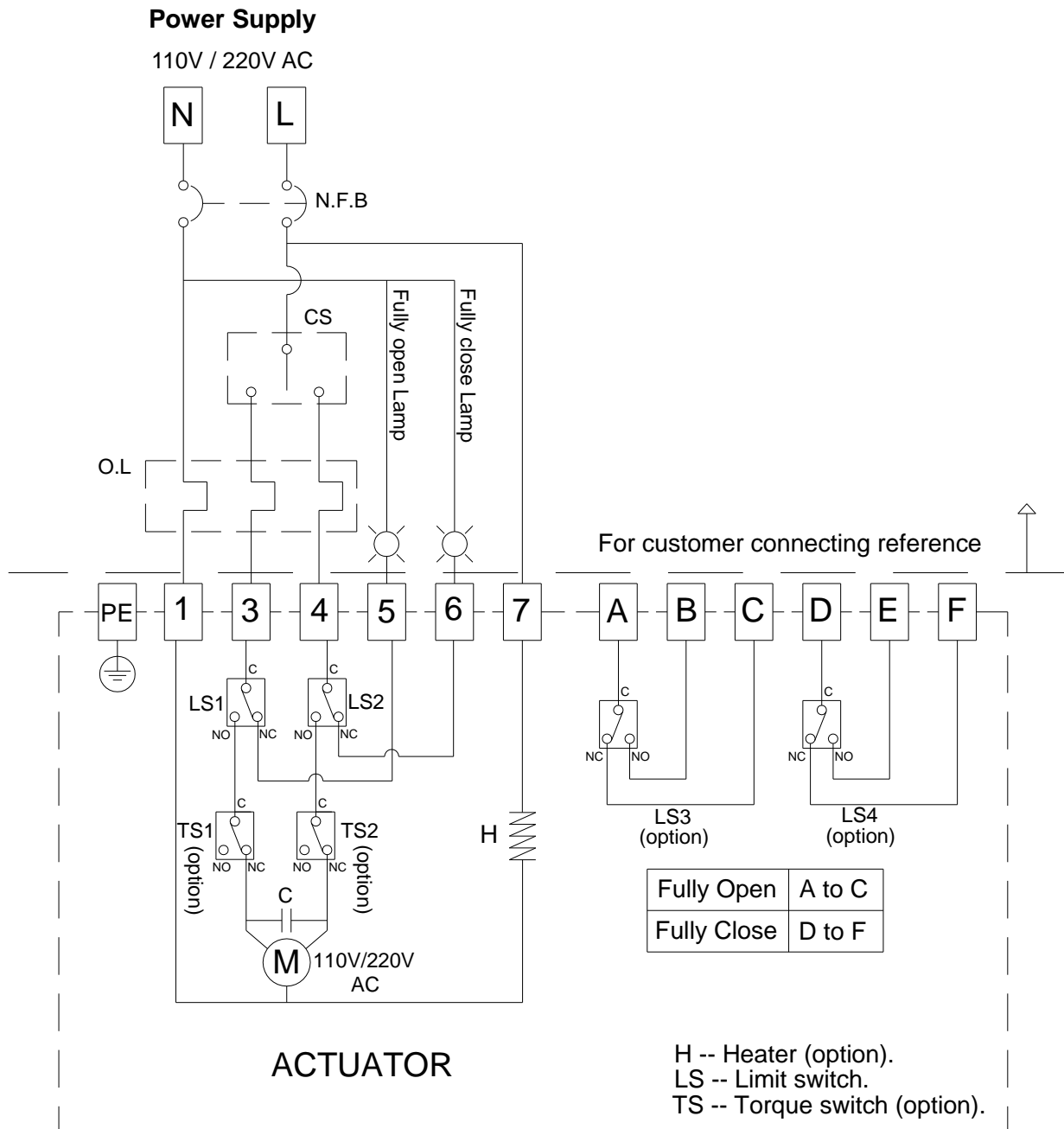


- Plastic cover (material: ABS Impact Resistance)  
No manual override, mechanical stops and certificates

# WIRING DIAGRAM – Quarter Turn Actuator

BM-2 , OM-2~OM-13 , OM-F , OM-G 110V , 220V AC 1-Phase

On-Off Controller



**NOTE :**

1. "N" connects to #1, "L" connects to #7.
2. "L" connects to #3 for "OPEN", "L" connects to #4 for "CLOSE".
3. Using less than 5A current for "A, B, C, D, E, F".
4. BM-2 could not install torque switches.